

The VersaBin™ System

For Automated Packaging

The VersaBin™ System offers flexible organization of packaging in singular bins, allowing you to easily and effectively accommodate for resident discharges, short-term leaves and room changes. VersaBin is perfect for:

- Automated compliance packaging systems
- Opus® Unit Dose System
- MTS® Opti-Pak™ System



The adaptability of the Artromick VersaBin™ System lets you decide how resident medications, PRNs and small items should be stored, organized, and restocked.

- Flexible organization of packaging in single, modular bins
- Resident discharges, short-term leaves and room changes are easily accommodated
- Bin dividers and flexible labeling system enhance VersaBin's clean and simple approach to packaging organization
- Large resident capacity per cart with the flexibility to change from punch card to VersaBin configuration quickly and easily



The adaptability of the VersaBin™ System lets you decide how resident medications, PRNs and small items should be stored, organized, and restocked.

The Artromick LTC Medication Cart Series

- Innovative, modern design offers unparalleled performance and reliability
- Choose from a wide selection of cart models, accessories and lock systems including keyless access with AutoLock™ Security
- Contact Capsa Solutions today for an on-site demonstration!



VersaBin™ Components

VersaBin Automated Packaging System

Part Number:19420

Description: VersaBin - Small 3.5"

Size in Inches: 8.64(l) x 3.36(w) x 2.96(h)

Size in Centimeters: 21.93(l) x 8.53(w) x 7.49(h)



Part Number:19460

Description: VersaBin Transfer Tote Assembly Small - 4-High

Size in Inches: 21.75(l) x 9.25(w) x 13.75(h)

Size in Centimeters: 55.25(l) x 23.5(w) x 34.93(h)



Part Number:19410

Description: VersaBin - Medium 5"

Size in Inches: 8.64(l) x 5.20(w) x 2.88(h)

Size in Centimeters: 21.93(l) x 13.21(w) x 7.30(h)



Part Number:19461

Description: VersaBin Transfer Tote Assembly Small - 5-High

Size in Inches: 21.75(l) x 9.25(w) x 16.75(h)

Size in Centimeters: 55.25(l) x 23.5(w) x 42.55(h)



Part Number:19415

Description: VersaBin - Large 7"

Size in Inches: 8.64(l) x 6.95(w) x 2.88(h)

Size in Centimeters: 21.93(l) x 17.65(w) x 7.30(h)



Part Number:19464

Description: VersaBin Transfer Tote Assembly Large - 4-High

Size in Inches: 28.75(l) x 9.25(w) x 13.75(h)

Size in Centimeters: 73.03(l) x 23.5(w) x 34.93(h)

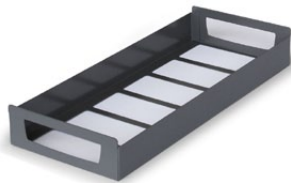


Part Number:19428

Description: VersaBin Tray - S-Drawer

Size in Inches: 8.48(l) x 20.85(w) x 2.85(h)

Size in Centimeters: 21.54(l) x 52.96(w) x 7.24(h)



Part Number:19465

Description: VersaBin Transfer Tote Assembly Large - 5-High

Size in Inches: 28.75(l) x 9.25(w) x 16.75(h)

Size in Centimeters: 73.03(l) x 23.5(w) x 42.55(h)



Part Number:19429

Description: VersaBin Tray - L-Drawer

Size in Inches: 8.48(l) x 27.80(w) x 2.85(h)

Size in Centimeters: 21.54(l) x 70.61(w) x 7.24(h)



CAPSA SOLUTIONS



www.capsasolutions.com

800 437 6633

© Capsa Solutions, 2011

Form C-184