

TechnoPlus

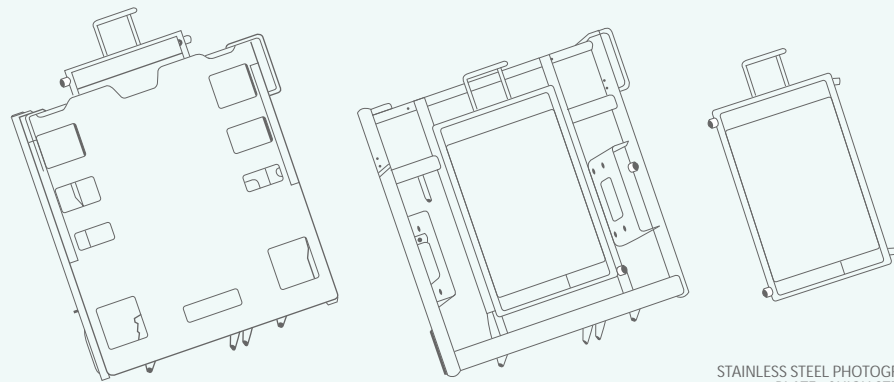
articulated bed



TechnoPlus | features



TechnoPlus | X-Ray Ready



STAINLESS STEEL PHOTOGRAPHIC-PLATE of HIGH STRENGTH



Somier Bed with sliding rails system for photographic-plate tray and X-Ray transparent HPL backrest panel. This allows Hospital to have every bed X-Ray transparent in backrest panel, meaningfully decreasing transfer and bother patients as well as workload of healthcare personnel.



1 "FULL LENGTH" SIDERAILS

The new siderails from headboard to footboard cover the full length of the bed, offering a retentive function, without causing burden sensation.

Made of polypropylene, its design allows the passing of light and the complete vision of the room, from the point of view of the patient.

It operates quickly and the lowering is assisted by a shock absorber in order to avoid any abruptness during its movement, especially during the last centimetres of its path. Both siderails are operated by one hand, having the second one free in case it is required to assist the patient.

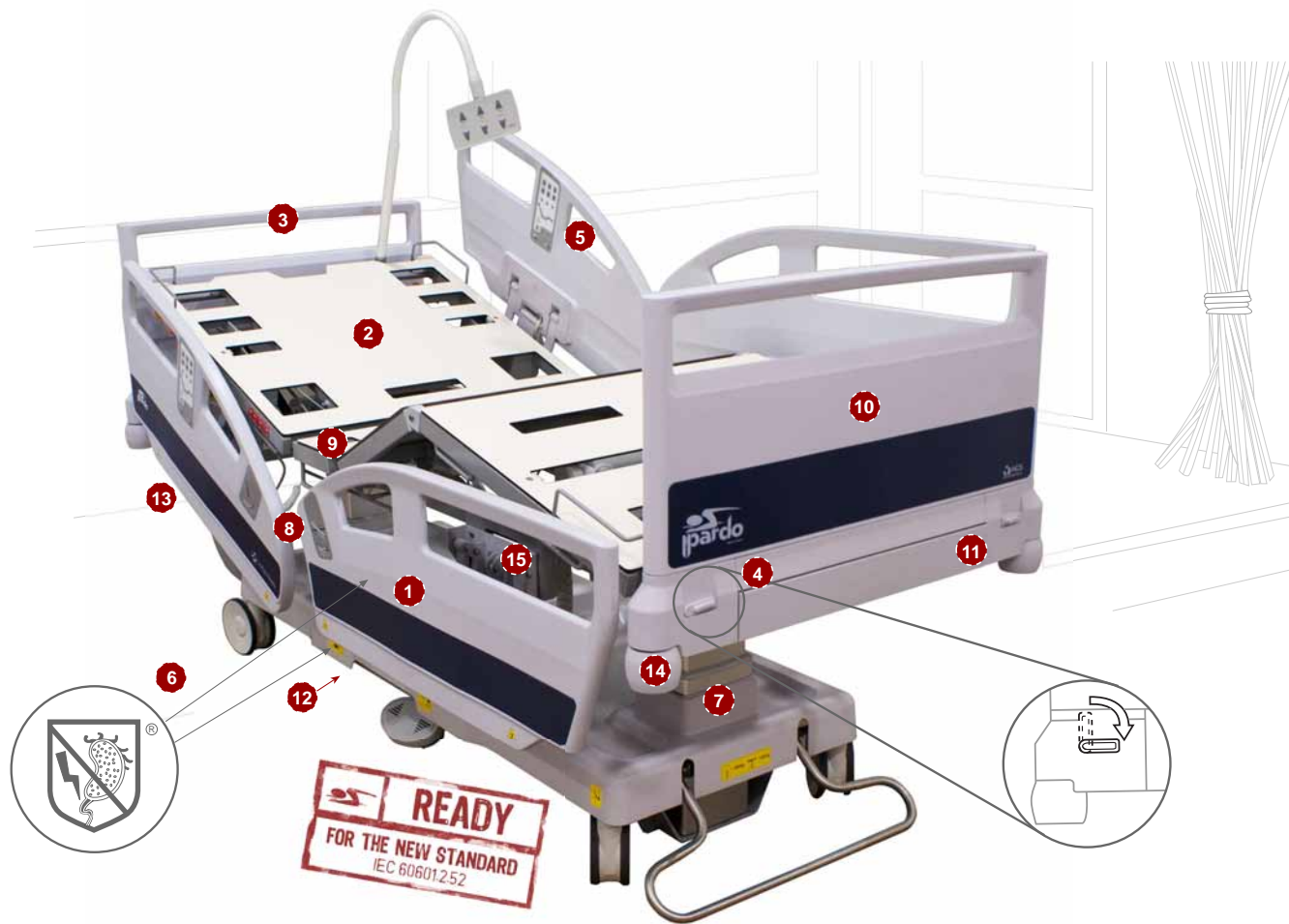
It's ready for the New Standard IEC 60601-2-52.

2 HPL BEDBASE WITH DOUBLE AUTORETURN SYSTEM TO PREVENT PRESSURE ULCERS

The synchronized movement of thorax and leg sections when they are activated improves the distribution of pressures and contributes to the reduction of the pressure ulcer occurrence.

This has been studied by ID-ERGO, institute of research and development belonging to I3A (Institute of Engineering research of Aragon) and carried out according to a test protocol revised and validated by GNEAUPP (National Group for the Study and Advising in regard to Ulcers per Pressure and Chronic Injuries). It's inferred that double autorreturn system decrease to a large degree pressure ulcer occurrence.

Bedbase is made of removable (without tools) HPL panels. It is fireproof, water resistant, antifungus and high resistant to scratch. Ideal for hospital use.



3 FIX HEADBOARD

Option to fix the headboard to the undercarriage. This way headboard is always at the same position when trend and reverse trendelenburg are used.

4 REMOVABLE HEAD AND FOOTBOARD WITH LOCKING FUNCTION

Removable head and footboard made of polypropylene. The footboard and headboard can be locked by a mechanism that even lift the bed from the ground without risk of being unlocked.

To lock both footboard and headboard, operate lateral levers (both) till the horizontal position. To unlock, operate both levers till the vertical position.

5 BUILT-IN CONTROLS/PREPROGRAMMED FUNCTIONS. "MEMORY" BUTTON

The bed allows up to 4 membrane controls built-in siderails. Four different preprogrammed functions can be operated from the nursing control to ease the work of care assistants:

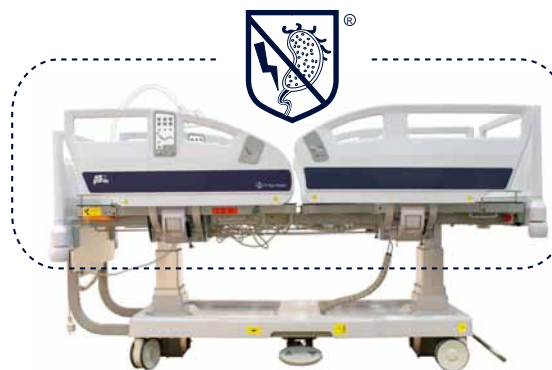
- Cardiac chair position
- CPR emergency position
- Examination position
- MAX. Trendelenburg

It has been included a button intended to be used both nurse and patient to memorize a user-chosen position taking into account its comfort or every patient pathology. This button is named "M" of memory.

6 ANTIMICROBIAN SHIELD PROTECTION

Thanks to an special chemical formula, containing silver ions, bed's components meaningfully increase its protection against creation and spread of germs, minimizing risks of patient, relative and clinical staff's infection.

This chemical formulation act against microorganisms in an active way attacking the bacteria's cell membrane and disturbing protein's metabolism, to sum up, it provides a high level of asepsis above any other current hospital bed.



7 RECTANGULAR COLUMNS

Column construction bed of rectangular section and motorisation with protection grade IP66; It's rectangular shape with lower joint prevent from torsion that can damage the columns in case of unequal loads and protect inside motors isolating them from cold and dust. Mattress platform height adjustment from 42 to 82 cm.



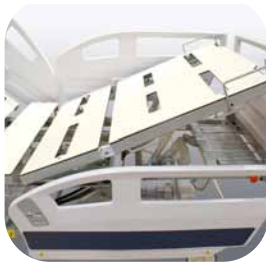
8 GRADE SCALE

Both siderails (upper and lower), have built-in a degree indicator to ease the right patient posturing

9 THERAPEUTIC POSITION OF LEG SECTION

The leg section is aligned with the thigh section by means of a point hinge that reaches up to 43°.

This therapeutic position is intended to facilitate the return circulation, and it is specially useful for long-stay patients.



10 EXTENSIBILITY

The bed can be extended up to 30 extra cm., so it can be adapted to the needs of the patient.

11 EXTENDABLE TABLE

Extendable table under footboard as bed stripper support, nursery equipment support or even have lunch.



12 FIFTH WHEEL DIRECTIONAL, AUTOMATIC DAMPING AND CONDUCTIVE

Made of high strength synthetic-plastic materials, intended to avoid metallic parts shown and therefore, making impossible rust.

- Automatic: Avoid the pedal, wherewith clinical staff's work load decrease.

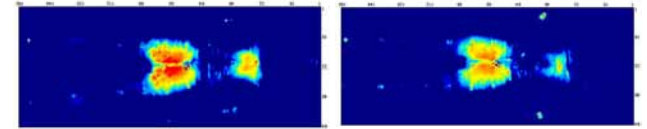
- Damping: The shock absorber system avoids 5th wheel's damage against stairs (id est: entrance, exit of lifts).

- Conductive: It allows to conduct static electricity to the ground due to wheel's band material.

TechnoPlus I UPP's prevention

Double Autoregression

This feature allows to reduce the pressure-map on the patient during articulation movement. Images show comparison with and without this feature.

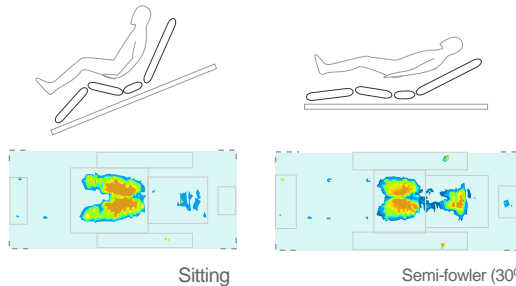


Bed without double auto-regression

Bed with double auto-regression

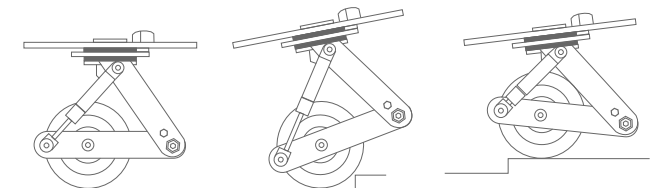
Pressure distribution in accordance with position

The pressure distribution depends on patient's position on the bed. It's important to know and apply correctly the most advisable positions in long-term patients in order to aid UPP's reduction.



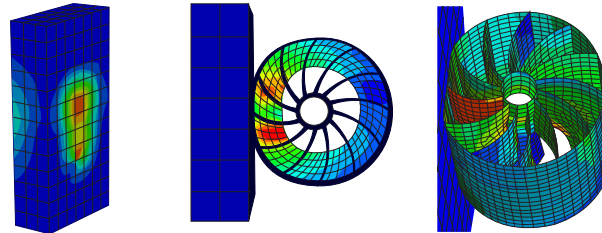
Sitting

Semi-fowler (30°)



13 AUTOMATIC DETENTION AT HORIZONTAL POSITION

While Trendelenburg / Antitrendelenburg movements, the bed is stopped automatically at horizontal position in any height.

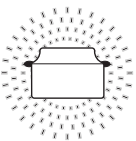
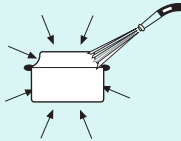


14 PROTECTION CYLINDERS

Lateral protection cylinders with internal stiffeners helix shaped. The bigger cylinder's height versus a disk, distribute in a much more effective way the energy of impact in a bigger area. Furthermore, the design with internal stiffeners helix shaped, allows a bigger distortion and kinetic energy absorption, avoiding/minimizing transfer to the wall. This enable decrease damages in hospital facilities.

15 COVER AGAINST LIQUIDS OF THE MOTORIZATION/ELECTRONIC SYSTEM

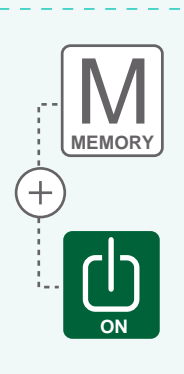
Protection against penetration of water and/or liquids. Highest protection grade of the electronic equipment. IPX6 instead of IPX4.

MEANING	IPX4	IPX6
Protection of the enclosure against harmful ingress of	Splashing water	Powerful water jets
Environment test		

TechnoPlus I Control panels

Membrane siderail control

Membrane controls built-in siderails include raising/lowering functions for back-rest, thigh-rest and bed surface. It has a button for its own activation, as well as three special function buttons as "Memory" button, nurse call or underbed light.



"Memory" Button

Customization of back-rest and thigh-rest position by means of memory button. By means of this function, the bed store the desired position and just pushing this button, the bed returns to that position from any other.

Patient control panel

Patient control with cord, include functions as raising/and lowering of back-rest and thigh-rest, as well as bed surface height variation and cardiac chair, CPR in case of cardiac arrest.



Nursing control panel

Apart from operate every bed movement, included Trend/ Antitrendelenburg movement, it has four preprogrammed functions: Examination, Emergency Trendelenburg, Cardiac Chair and CPR.

On the other hand, the control pad allows each function locking as well as an extra locking function of every control pads within reach of patient.



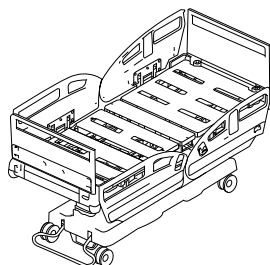
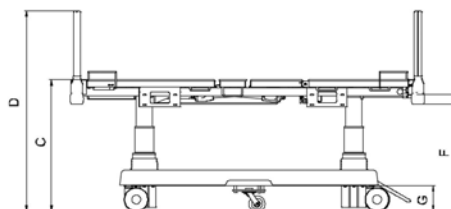
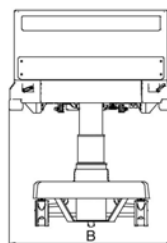
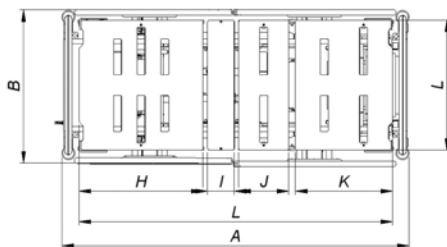
TECHNICAL DIMENSIONS AND GENERAL FEATURES "TECHNOPLUS"

DIMENSIONES Y PESOS

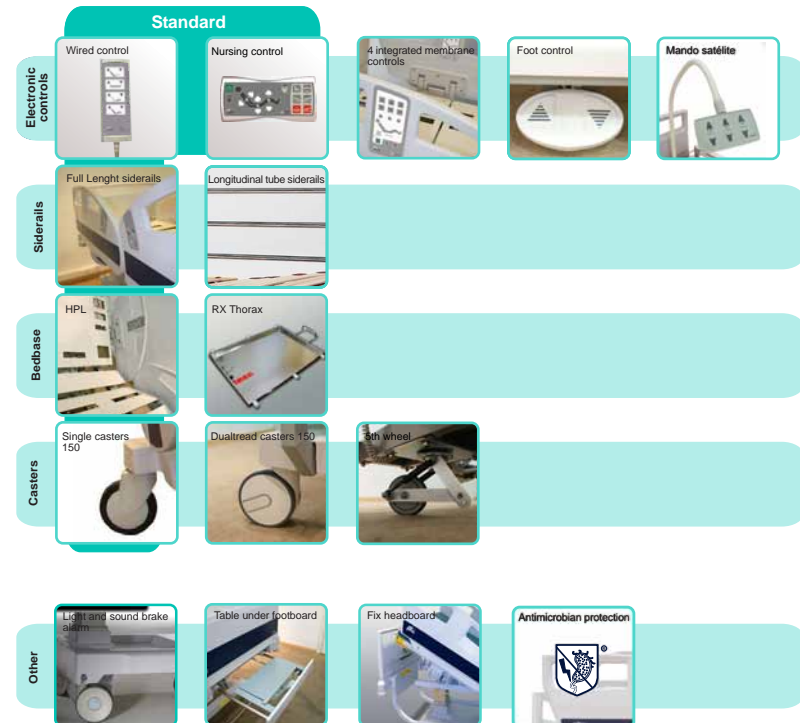
Maximum outside length including siderails (A)	220±1 cm
Maximum width including siderails (Down / Up) (B)	95,5 cm / 97 cm
Minimum / maximum platform height (w/mattress) (C)	42 / 82 cm
Total bed height (minimum / maximum) (D)	85 / 125 cm
Integrated mattress platform extension (E)	30 cm
Minimum / maximum height from floor to corner bumpers (F) (height of corner bumper: 6,5 cm)	27 / 67 cm
Under bed clearance for mobile hoists (G)	16,3 cm
Recommended mattress dimension (L)	86 x 200 x 14 cm
Mattress platform individual length (H-I-J-K)	79 - 17 - 32 - 62 cm
Backrest maximum tilt angle	70° (±3°)
Legrest maximum tilt angle	40° (±3°)
Double auto-regresion (retraction)	16,5 cm
Trendelenburg - Reverse Trendelenburg position	18° - 18° (±1°)
Maximum patient Weight (MPW) / Safe Working Load (SWL)	185 kg / 250 kg
Weight (without accesories)	150 kg

ELECTRICAL EQUIPMENT

Maximum Input / Feeding	3 A máx. / 230V±10% a.c. 50/60 Hz
Type of protection against electrical current / water and dust penetration	Class II Tipo B / IP66
Electrical motor operation mode	10% máx. 2min / 18 min
Optional electrical equipment	110V±10% a.c. 50/60Hz "K" Plug Type



TechnoPlus | options



TechnoPlus | accesories



Autovía de Logroño, km 5,800 - 50011 Zaragoza (Spain)
Tel.: +34 976 300 033 - Fax: +34 976 320 647

Our goods are trademarked. Models and technical specifications described in this catalogue are subject to modification without previous notice.
Code 13500608 - 01 - July 2011