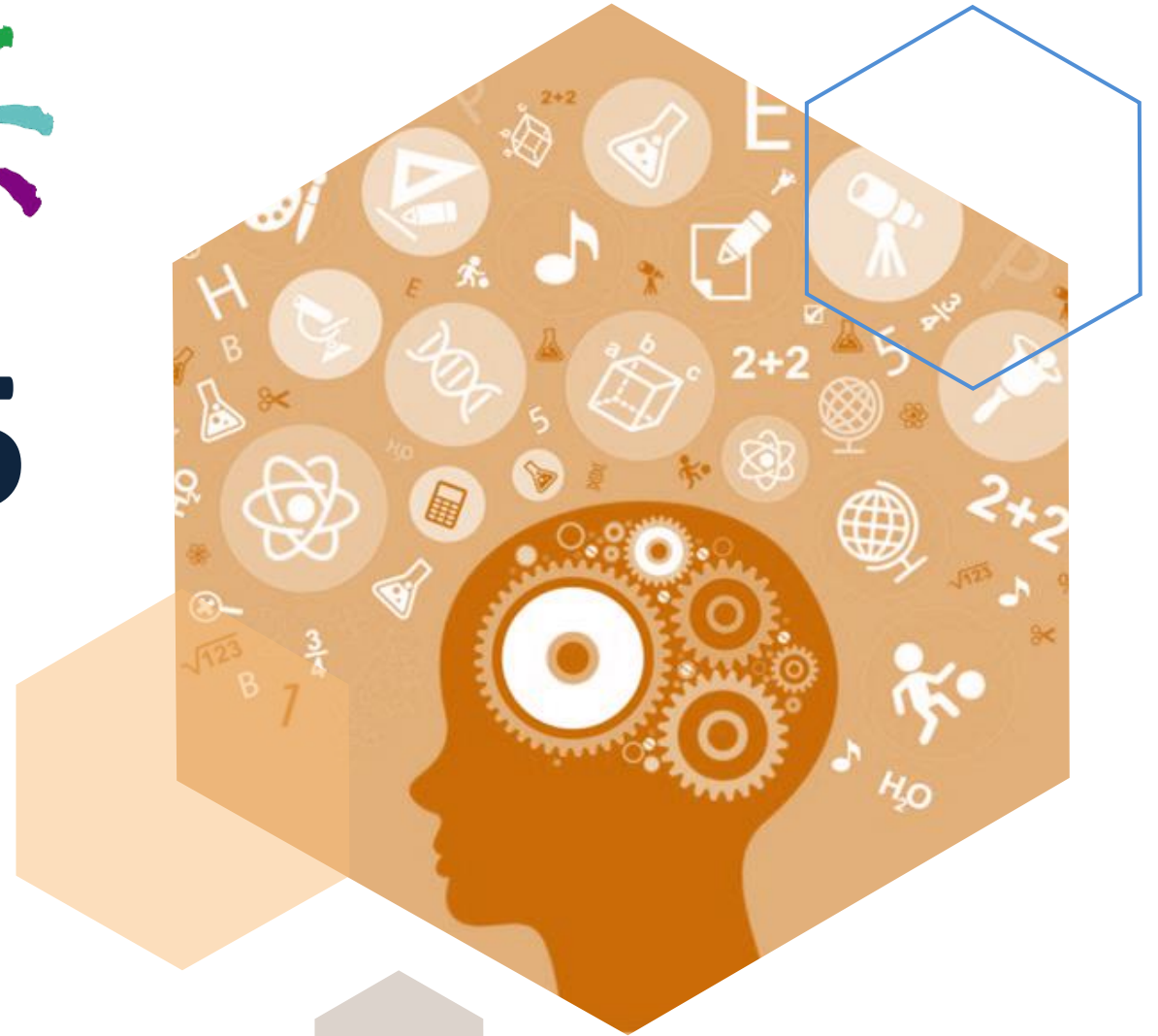


RT54-2025

1 July 2025 to 31 July 2030



<u>Item Number</u>	<u>Description</u>	<u>Code</u>	<u>Price Incl. 15% VAT</u>
RT54-04-060	Baseline 24-hour Combination Stopwatch/Clock	FAB12-2100	R621.00
RT54-04-061	Duracell	FAB12-LR44B	R80.00
RT54-08-106	Mini-Mental State Examination- Second Edition (MMSE-2)	STL32157	R15 015.25
RT54-08-107	MMSE-2 User's Manual	STL32157M	R7 345.80
RT54-08-108	MMSE-2 Pocket Norms Guide	STL32157G	R2 443.40
RT54-08-109	MMSE-2 Processing Speed Scoring Templates-Blue & Red (set/2)	STL32158T	R1 133.55
RT54-08-110	MMSE-2: Standard Version Blue Forms, Pk/25	STL32157-SB	R3 217.40
RT54-08-111	MMSE-2: Standard Version Red Forms, Pk/25	STL32157-SR	R3 217.40
RT54-08-112	MMSE-2: Brief Version Blue Forms, Pad/25	STL32157-BB	R1 490.00
RT54-08-113	MMSE-2: Brief Version Red Forms, Pad/25	STL32157-BR	R1 490.00
RT54-08-125	Quick Neurological Screening Test- Third Edition Revised (QNST-3R)	STL32022	R8 341.70
RT54-08-126	QNST-3R Manual	STL32022M	R4 170.85
RT54-08-127	QNST-3R Remedial Guidelines Forms, Pk/25	STL32022G	R1 490.00
RT54-08-128	QNST-3R Record Forms, Pk/25	STL32022R	R2 681.60
RT54-08-156	Rey Complex Figure Test and Recognition Trial Kit (RCFT)	STL31410	R32 950.00
RT54-08-157	RCFT Professional Manual with Manual Supplement	STL31410M	R12 274.30
RT54-08-159	RCFT Stimulus Card	STL31410S	R2 264.00
RT54-08-160	RCFT Test Booklets, Pk/50	STL31410R	R20 437.20
RT54-08-215	Grooved Pegboard Test	FAB12-3010	R7 083.00
RT54-08-216	Grooved Pegboard Accessory - 30 pegs	FAB12-3011	R2 689.80

<u>Item Number</u>	<u>Description</u>	<u>Code</u>	<u>Price Incl. 15% VAT</u>
RT54-08-217	Purdue Pegboard Test	FAB12-3000	R8 517.50
RT54-08-219	Purdue Pegboard Accessory - 25 collars, 45 washers & 55 pins	FAB12-3001	R2 664.10
RT54-08-220	Purdue Pegboard Accessory - 25 Scoring Forms	FAB12-3002	R1 742.00
RT54-08-223	Draw-A-Person Intellectual Ability Test (DAP:IQ)	STL31466	R8 878.20
RT54-08-224	DAP:IQ Manual	STL31466M	R3 634.50
RT54-08-226	DAP:IQ Administration/Scoring Forms, Pk/50	STL31466R	R3 634.50
RT54-08-227	DAP:IQ Drawing Forms, Pad/50	STL31466D	R2 383.40
RT54-08-228	DAP:SPED: Draw A Person: Screening Procedure for Emotional Disturbance	PED5120	R10 810.00
RT54-08-229	DAP:SPED Examiner's Manual	PED5121	R5 123.30
RT54-08-230	DAP:SPED Scoring Template (10)	PED5123	R3 125.20
RT54-08-231	DAP:SPED Record Forms (25)	PED5122	R3 586.30
RT54-08-271	Evaluation of Competency to Stand Trial™–Revised (ECST™-R)	STL31462	R27 646.60
RT54-08-272	ECST-R Manual	STL31462M	R8 520.50
RT54-08-273	ECST-R Interview Booklet	STL31462I	R7 567.10
RT54-08-274	ECST-R Record Forms, Pk/25	STL31462R	R8 520.50
RT54-08-275	ECST-R Profile/Summary Forms, Pk/25	STL31462P	R3 336.80
RT54-08-279	Suicide probability scale (SPS) KIT	STL32819	R11 857.25
RT54-08-280	SPS Manual	STL32819M	R6 733.00
RT54-08-281	SPS Test Forms, Pk/25	STL32819F	R5 481.90
RT54-08-282	SPS Profile Forms, Pad/100	STL32819R	R5 481.90



Item Number	Description	Code	Price Incl. 15% VAT
RT54-08-286	Childhood Autism Rating Scale-2 (CARS-2)	STL32137	R19 305.00
RT54-08-287	CARS2 Manual	STL32137M	R8 937.50
RT54-08-288	CARS2 Questionnaire for Parents or Caregivers, Pk/25	STL32137-PC	R3 455.70
RT54-08-289	CARS2 Standard Version Rating Booklets, Pk/25	STL32137-ST	R4 766.70
RT54-08-290	CARS2 High-Functioning Rating Booklets, Pk/25	STL32137-HF	R4 766.70
RT54-08-319	Personality Assessment Inventory (PAI)	STL35520	R41 291.35
RT54-08-320	PAI Interpretive Guide	STL35520I	R11 797.30
RT54-08-321	PAI Interpretive Guide	STL35520I	R11 797.30
RT54-08-322	PAI Critical Items Forms, Pk/25	STL35520C	R4 409.10
RT54-08-323	PAI Hand-Scorable Answer Sheets, Pk/25	STL35520R	R7 269.40
RT54-08-324	PAI Adult Profile Forms, Pk/25	STL35520P	R5 124.30
RT54-08-339	Adaptive Behavior Assessment System- 3, Comprehensive Kit	STL32121	R32 115.60
RT54-08-340	ABAS-3 Manual	STL32121M	R17 517.50
RT54-08-342	ABAS-3 Teacher/Daycare Forms, Pk/25	STL32121D	R7 686.40
RT54-08-343	ABAS-3 Parent/Caregiver Forms, Pk/25	STL32121C	R7 686.40
RT54-08-344	ABAS-3 School Parent Forms, Pk/25	STL32121F	R7 686.40
RT54-08-345	ABAS-3 School Teacher Forms, Pk/25	STL32121T	R7 686.40
RT54-08-346	ABAS-3 Adult Forms, Pk/25	STL32121G	R7 686.40
RT54-08-409	DTVP-3: Developmental Test of Visual Perception - Third Edition	PED13700	R16 445.70
RT54-08-410	DTVP-3: Examiner's Manual	PED13701	R4 764.70
RT54-08-411	DTVP-3: Picture Book	PED13702	R4 457.30
RT54-08-412	DTVP-3: Response Booklet (25)	PED13704	R5 277.00
RT54-08-413	DTVP-3: Examiner Record Book (25)	PED13703	R2 510.40

Item Number	Description	Code	Price Incl. 15% VAT
RT54-08-422	BEERY VMI-6: Beery-Buktenica Developmental Test of Visual-Motor Integration-Sixth Edition Starter Kit	PED13588	R11 035.50
RT54-08-423	BEERY VMI-6 Manual	PED13589	R5 435.80
RT54-08-442	DLOTCA™	NC34560	R16 351.40
RT54-08-447	DLOTCA-G™	NC34560-G	R16 998.90
RT54-08-455	DTVP-A:2 Developmental Test of Visual Perception– Adolescent and Adult: Second Edition	PED14915	R20 134.40
RT54-08-456	DTVP-A:2 Examiner's Manual	PED14916	R5 174.50
RT54-08-457	DTVP-A:2 Copying Subtest Scoring Template	PED14921	R461.10
RT54-08-458	DTVP-A:2 Picture Book	PED14917	R5 174.50
RT54-08-460	DTVP-A:2 Examiner Record Forms (25)	PED14919	R3 637.50
RT54-08-461	DTVP-A:2 Response Booklets (25)	PED14918	R4 047.40
RT54-08-471	Test of Visual Motor Skills- Third Edition (TVMS-3)	STL30223	R10 129.20
RT54-08-473	TVMS-3 Test Booklets, Pk/15	STL30223B	R3 575.00
RT54-08-474	TVMS-3 Record Forms, Pk/15	STL30223R	R1 311.00
RT54-08-475	Test of Visual Perceptual Skills- Fourth Edition (TVPS-4)	STL32206	R13 406.50
RT54-08-476	TVPS-4 Manual	STL32206M	R4 886.10
RT54-08-477	TVPS-4 Test Plates	STL32206T	R5 541.30
RT54-08-478	TVPS-4 Record Forms, Pk/25	STL32206R	R2 979.20
RT54-08-486	Dementia Rating Scale- Second Edition, Kit (DRS-2 Kit)	STL32595	R29 970.50
RT54-08-489	DRS-2 Scoring Booklets, Pk/50	STL32595R	R14 002.40
RT54-08-490	DRS-2 Profile Forms, Pk/50	STL32595P	R4 587.90





RT54-04-060

**Baseline 24-hour Combination Stopwatch/Clock:
FAB12-2100**

A lightweight, multi-functional digital timer with easy-to-read digital display shows hours, minutes and seconds up to 23 hours, 59 minutes and 59 seconds.

Use it to display time in 12- or 24-hour increments and the calendar date, which includes month and day of the week. You can also use the stopwatch to record with 1/100-second precision for the first 30 minutes and one second thereafter for up to 24 hours.

The watch also functions as a regular time-of-day clock complete with a programmable alarm option that beeps with a chime.

Included with the Baseline Stopwatch is an alkaline battery and a beautifully woven, detachable lanyard.



**RT54-04-061
Battery for Stopwatch
FAB12-LR44B**



RT54-08-156

Rey Complex Figure Test and Recognition Trial (RCFT)

The RCFT standardizes the materials and procedures for administering the Rey complex figure, measures recognition memory for the elements of the Rey complex figure, and assesses the respondent's ability to use cues to retrieve information.

Appropriate for use with children and adults, the instrument enables you to gather information on major aspects of neuropsychological functioning.

Note: Stopwatch is required for administration.

**RT54-08-216
Grooved Pegboard
Accessory Pins:
FAB12-3011**



**RT54-08-125
Quick Neurological Screening Test-
Third Edition Revised (QNST-3R)**

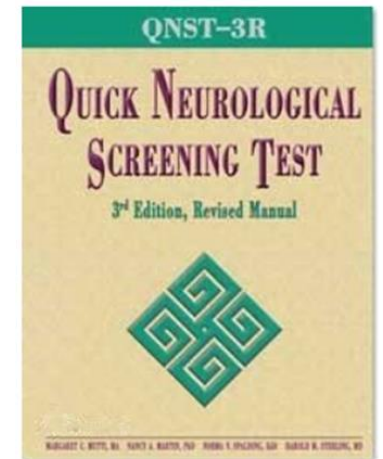
Assesses the development of motor coordination and sensory integration, from early childhood through elderly.

Age Range: 4 through 80+ years

Time: 20-30 minutes

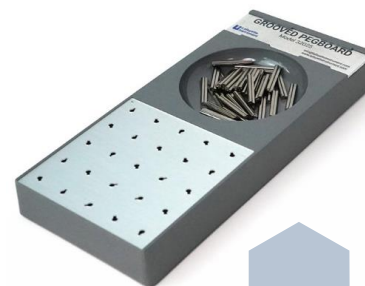
Restricted Use: Level B

The QNST-3R includes tasks commonly used in traditional neurologic exams, and requires no special equipment—just a pencil. **The QNST-3R Kit** includes 25 each of the Record Forms and Remedial Guidelines (developmental activities) Forms and a Manual.



**RT54-08-215
Manipulation and Dexterity Test - Grooved
Pegboard:
FAB12-3010**

Grooved pegboard manipulative dexterity test consists of 25 holes with randomly positioned slots. Pegs with a "key" along one side must be rotated to match hole before inserted. The test requires more complex visual-motor coordination.



RT54-08-106

Mini-Mental State Examination- Second Edition (MMSE-2)

A brief assessment of cognitive impairment.

Marshall F. Folstein, M.D. and Susan Folstein, M. D.

Age Range: Adult-Elder Adult

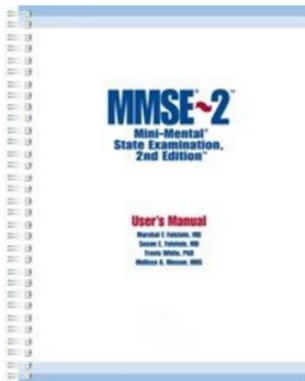
Time: 5-20 minutes

Restricted Use: S or B

The MMSE-2 retains the clinical utility and efficiency of the original MMSE, while expanding its usefulness in populations with milder forms of dementia, including subcortical dementia. It can be used to:

- *Track patients' progress over time
- *Screen large populations for cognitive impairment
- *Select patients for clinical trials research in dementia treatment

The MMSE Standard Version Kit includes 25 each of the Red and Blue SV Forms, 10 Red and Blue BV Forms, a Manual and the Pocket Norms Guide.





RT54-08-217
Manipulation and Dexterity Test - Purdue Pegboard:
FAB12-3000

The industry standard in measuring the gross movements of hands (hand dexterity), fingers (unimanual and bimanual) and arms as well as finger-tip dexterity. The Purdue Pegboard Test has also proved useful in the assessment of motor deficits in both adults and children. The test board consists of two parallel rows of 25 holes each. Pins (pegs), collars and washers are placed in cups at the top of the testing board. Tests are standardized and timed as subjects are tasked with placing as many pegs in the holes as possible within the time limit.

RT54-08-228
DAP:SPED: Draw A Person: Screening
Procedure for Emotional Disturbance
PED5120

Jack Naglieri • Timothy McNeish • Achilles Bardos
Ages: 6 through 17
Testing Time: 20 minutes
Administration: Individual or Group

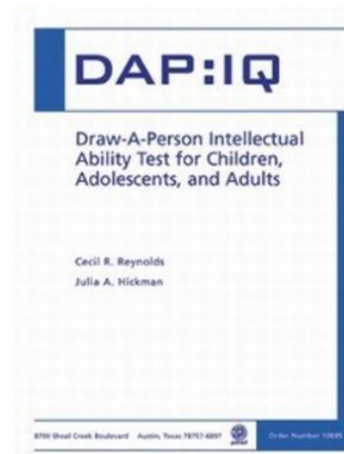
DAP:SPED helps identify children and adolescents ages 6 to 17 who have emotional problems and require further evaluation. It has items that are used to rate the drawings of a man, a woman, and the self.



RT54-08-271
Evaluation of Competency to Stand Trial™
–Revised (ECST™-R)

The ECST-R is a semi-structured interview designed to assess dimensions of competency to stand trial as propounded in *Dusky v. United States* (1960) and consistently affirmed in subsequent Supreme Court decisions.
Age: 18 - 79
Time: 25 - 45 minutes administration; 5 minutes scoring

RT54-2025 Sanbonani Holdings (Pty) Ltd



RT54-08-223
Draw-A-Person Intellectual Ability Test -DAP:IQ

Systematic method for evaluating the process used in a common drawing task to evaluate cognitive abilities

Cecil Reynolds and Julia Hickman
Ages: 4-0 through 89-11
Testing Time: 10-12 minutes
Administration: Individual or Group

COMPLETE DAP:IQ KIT INCLUDES: *Examiner's Manual, 50 Administration/Scoring Forms, and 50 Drawing Forms, all in a sturdy storage box.*



RT54-08-279
Suicide Probability Scale (SPS)

BY JOHN G. CULL, PHD AND WAYNE S. GILL, PHD

The *Suicide Probability Scale* (SPS) gives clinicians a rapid, accurate, and empirically validated measure of suicide risk in adults and adolescents over 13 years of age. Quick and cost-effective, the SPS permits routine screening in any high-risk setting.

SPS Kit contains Manual, 25 Profile Forms, and 25 test forms.

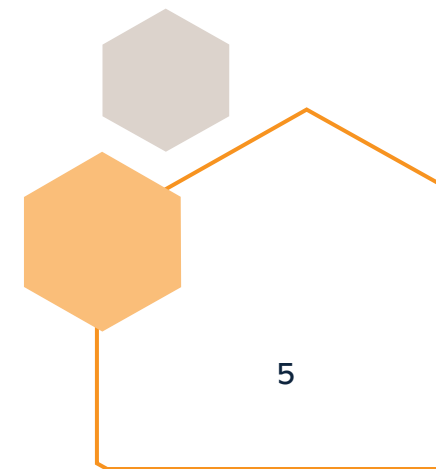
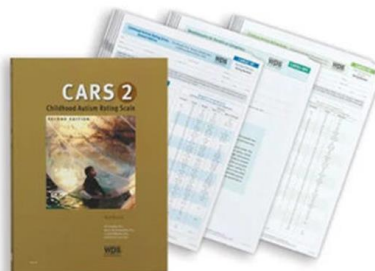


RT54-08-286
Childhood Autism Rating Scale-2 (CARS-2)

Ages: 2 years and older
Testing Time: 5 to 10 minutes
Administration: Individual

The Childhood Autism Rating Scale–Second Edition (CARS2) is a 15-item rating scale used to identify children with autism and distinguishing them from those with developmental disabilities.

COMPLETE CARS2 KIT INCLUDES: *25 Standard Version Rating Booklets (CARS2-ST); 25 High-Functioning Version Rating Booklets (CARS2-HF); 25 Questionnaires for Parents or Caregivers (CARS2-QPC); and a Manual.*





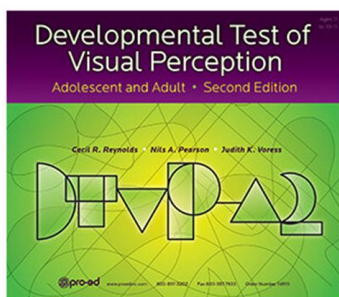
RT54-08-319 Personality Assessment Inventory (PAI)

This objective inventory of adult personality assesses psychopathological syndromes and provides information relevant for clinical diagnosis, treatment planning, and screening for psychopathology.

Test structure: The 344 PAI items constitute 22 nonoverlapping scales covering the constructs most relevant to a broad-based assessment of mental disorders: four validity scales, 11 clinical scales, five treatment scales, and two interpersonal scales. To facilitate interpretation and to cover the full range of complex clinical constructs, 10 scales contain conceptually derived subscales.

RT54-08-339 Adaptive Behaviour Assessment System- 3 (ABAS-3)

Comprehensive, convenient, and cost-effective, this behaviour rating scale measures daily living skills—what people actually do, or can do, without assistance from others. It is particularly useful for evaluating those with developmental delays, autism spectrum disorder, intellectual disability, learning disabilities, neuropsychological disorders, and sensory or physical impairments.



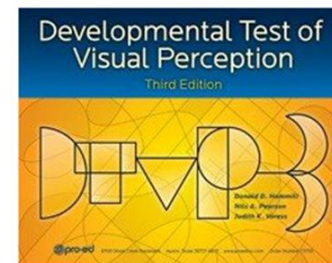
RT54-08-455 DTVP-A:2 Developmental Test of Visual Perception— Adolescent and Adult: Second Edition

Cecil Reynolds • Nils Pearson • Judy Voress
Ages: 11 through 79 years
Testing Time: 20 to 30 minutes
Administration: Individual

The *Developmental Test of Visual Perception—Adolescent and Adult: Second Edition* (DTVP-A:2) is a well-researched, norm-referenced measure of general visual-perceptual skills. The DTVP-A:2 was designed to measure visual-perception and visual-motor abilities.

COMPLETE DTVP-A:2 KIT INCLUDES: Examiner's Manual, Picture Book, 25 Examiner Record Forms, 25 Response Booklets, Copying Subtest Scoring Template, and Online Scoring and Report System, all in a sturdy storage box.

RT54-2025 Sanbonani Holdings (Pty) Ltd



RT54-08-409 DTVP-3: Developmental Test of Visual Perception – Third Edition, Expanded age range

Ages: 4-0 through 12-11
Testing Time: 30 minutes
Administration: Individual

The DTVP-3 is the most recent revision of Marianne Frostig's popular *Developmental Test of Visual Perception*. Of all the tests of visual perception and visual-motor integration, the DTVP-3 is unique in that its scores are reliable at the .80 level or above for all subtests and .90 or above for the composites for all age groups; its scores are validated by many studies; its norms are based on a large ($N = 1,035$), representative sample; it yields scores for both visual perception (no motor response) and visual-motor integration ability; and it is shown to be unbiased relative to race, gender, and handedness.

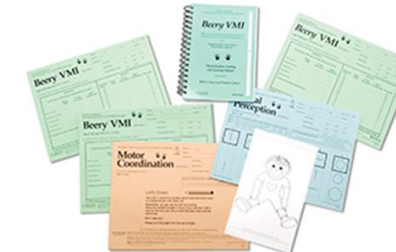
COMPLETE DTVP-3 KIT INCLUDES: Examiner's Manual, Picture Book, 25 Response Booklets, 25 Examiner Record Booklets, and a Copying scoring template, all in a sturdy storage box.

RT54-08-422 BEERY VMI-6: Beery-Buktenica Developmental Test of Visual-Motor Integration- Sixth Edition Starter Kit

Ages: 2 through 100
Testing Time: 15 minutes
Administration: Individual

Internationally respected and backed by decades of research and clinical use, the *Beery VMI*, now in its sixth edition, offers a convenient and economical way to screen for visual-motor, neuropsychological, and behavior problems. This new edition also provides updated reports of medical, neuropsychological, international, and other important advances in the use of the *Beery VMI* in recent years.

COMPLETE BERRY VMI-6 STARTER KIT INCLUDES: Manual, 10 Full Forms, 10 Short Forms, 10 Visual Perception Forms, and 10 Motor Coordination Forms.





RT54-08-442
DLOTCA™
NC34560

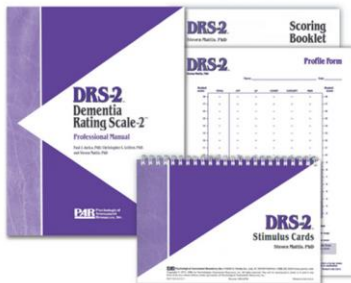
Use to obtain a detailed cognitive profile to effectively plan for intervention management and maintenance.

DLOTCA™ is designed to be used with clients aged 18-69 years old. It consists of 28 subtests in 7 cognitive areas: Orientation, Awareness, Visual Perception, Spatial Perception, Praxis, Visuomotor Construction and Thinking Operations.

RT54-08-447
DLOTCA™
NC34560-G

Use to obtain a detailed cognitive profile to effectively plan for intervention management and maintenance.

DLOTCA-G™ is designed to be used with clients aged 70 and over and specifically addresses physical and mental factors that can accompany aging by offering larger components, reduced pictorial detail, multiple choice questions, and shorter administration time. Consists of 24 subtests in 8 cognitive areas: Orientation, Awareness, Visual Perception, Spatial Perception, Praxis, Visuomotor Construction, Thinking Operations and Memory.



RT54-08-486
Dementia Rating Scale- Second Edition (DRS-2)

Steven Mattis, Ph. D. Professional Manual by Paul Jurica, Ph. D., Christopher Leitten, Ph. D and Steven Mattis, Ph. D.

Age Range: 55-89 years and older

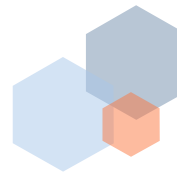
Time: 15-30 minutes

Restricted Use: Level C

The DRS-2 measures cognitive function at lower ability levels, where other evaluations may be limited by floor effects. It measures deficits in a large range of higher cortical functions and differentiates deficits of varying severity levels, making it useful in tracking changes in cognitive status over time.

The DRS-2 Kit includes the Professional Manual, Stimulus Cards and 50 each of the Scoring Booklets and Profile Forms.

RT54-2025 Sanbonani Holdings (Pty) Ltd



RT54-08-471
Test of Visual Motor Skills- Third Edition (TVMS-3)

Details deficits in visual perception, motor planning, and/or execution

Author: Nancy A. Martin, PhD

Individual or Group Administration

Ages: 3-0 through 90+

Testing/Scoring Time: 30-45 minutes

The TVMS assesses how well a person can coordinate visually guided fine-motor movements to copy a design while it is in sight. The TVMS-3 is used to determine whether there are any systematic distortions or gross inaccuracies in the copied design that could be the result of deficits in visual perception, motor planning, and/or execution.



RT54-08-475
Test of Visual Perceptual Skills- Fourth Edition (TVPS-4)

Now includes 18 items in each of the seven perceptual areas assessed, important for reading and spelling.

Nancy A. Martin, Ph.D.

Age Range: 5 through 21 years

Time: Approximately 25 minutes

The TVPS-4 is the latest update of the standard comprehensive assessment of visual analysis and processing skills. Widely used by school psychologists, occupational therapists, learning specialists and optometrists. Ideal for individuals with impairments in motor, speech, neurological or cognitive functions, this new edition utilizes black-and-white line drawings, in a convenient easel format. Items are multiple choice, and require only minimal verbal or motor (pointing) responses.

The TVPS-4 Kit includes the Test Plates, 25 Record Forms and a Manual.



Thank you

*Please don't hesitate to contact
us for any assistance.*

*We are here to support
wherever we can!*

Tel: +27 11 314 6617

Fax: +27 86 680 0648

Email: sales@sanbonani.co.za

Visit our Website: www.sanbonani.co.za

**Address: Unit 22, Dirk Smit Industrial Park,
Hennospark, Centurion, 0172**

P.O. Box 3089, The Reeds, 0158

Sanbonani
Holdings (Pty) Ltd

